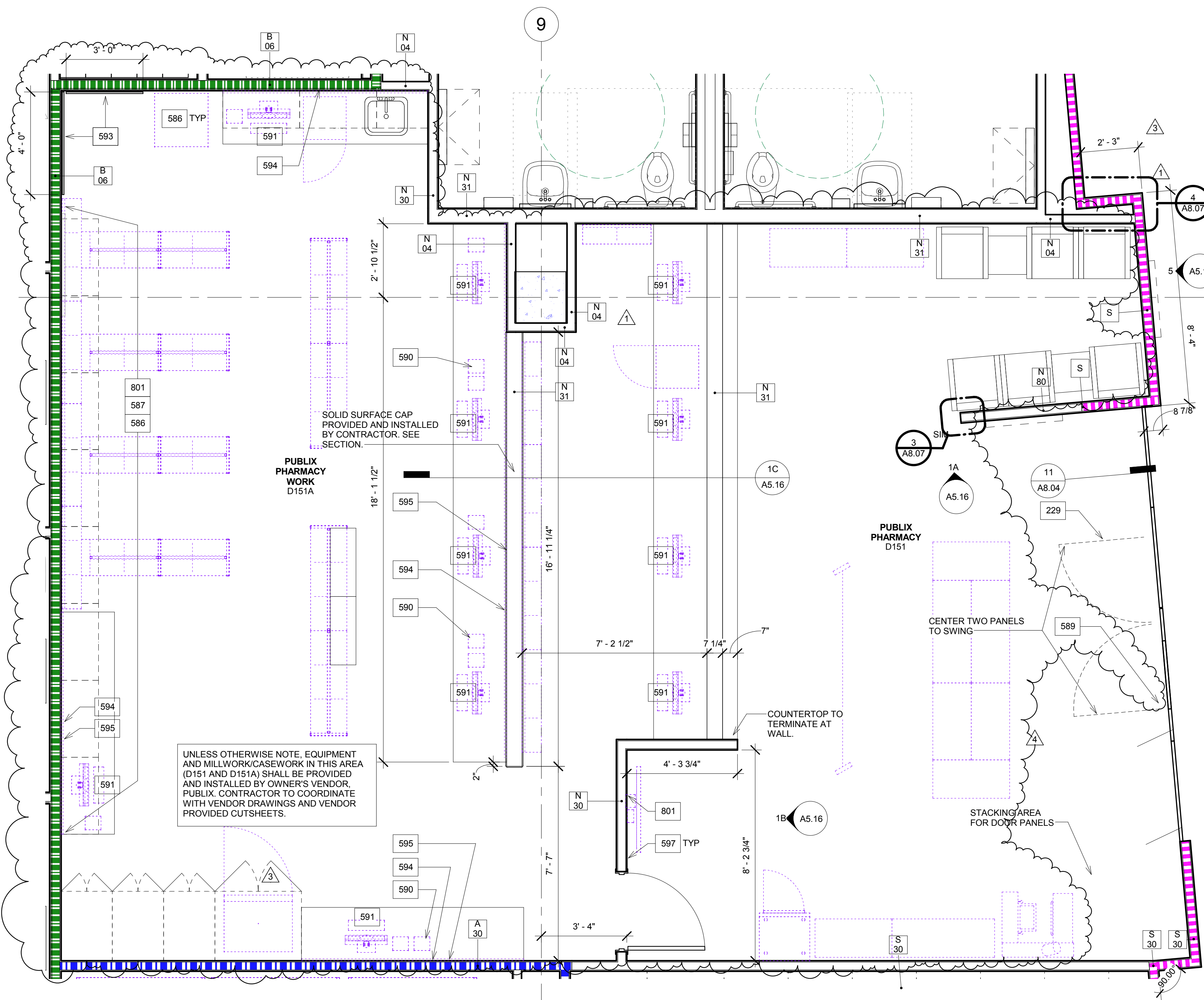
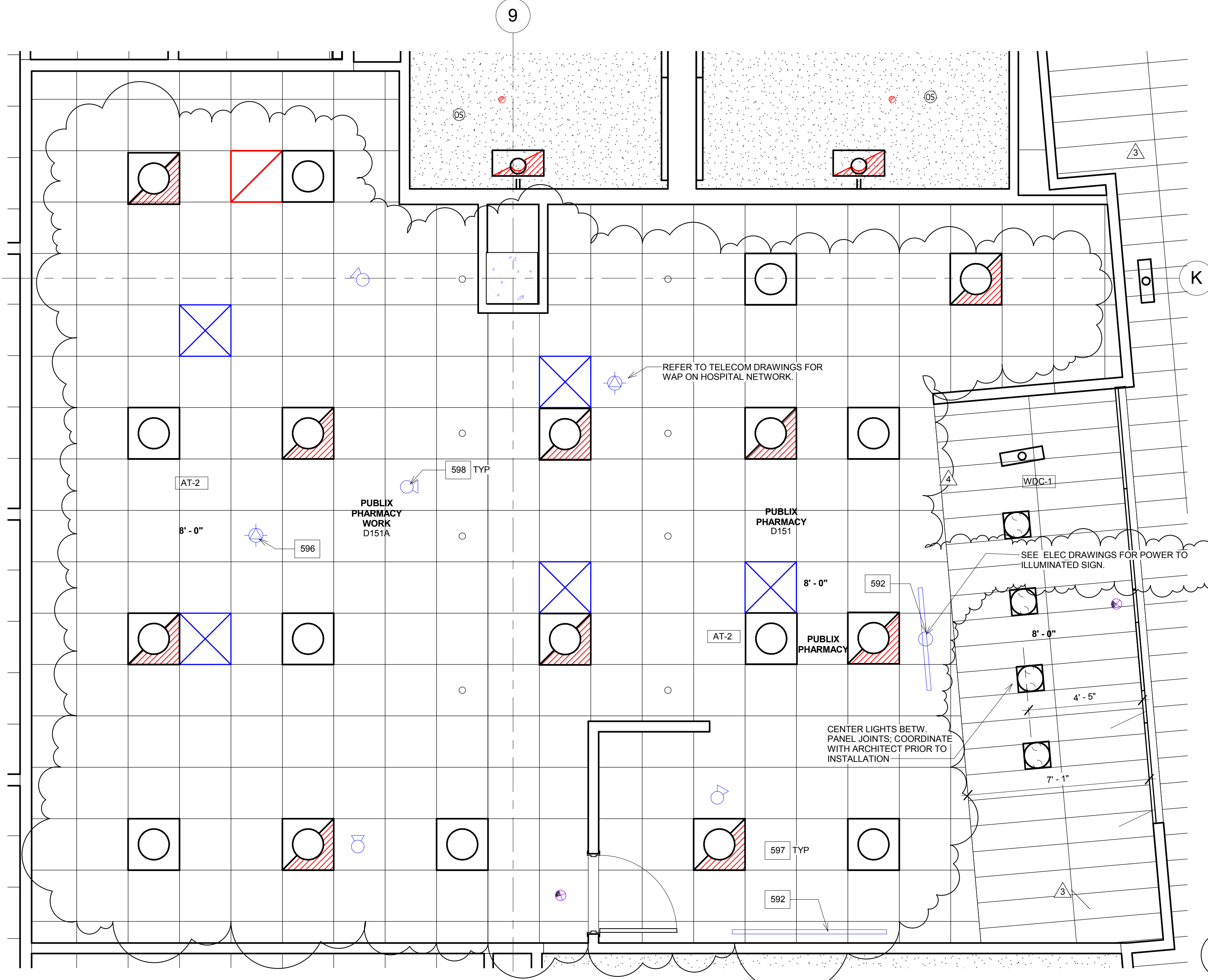


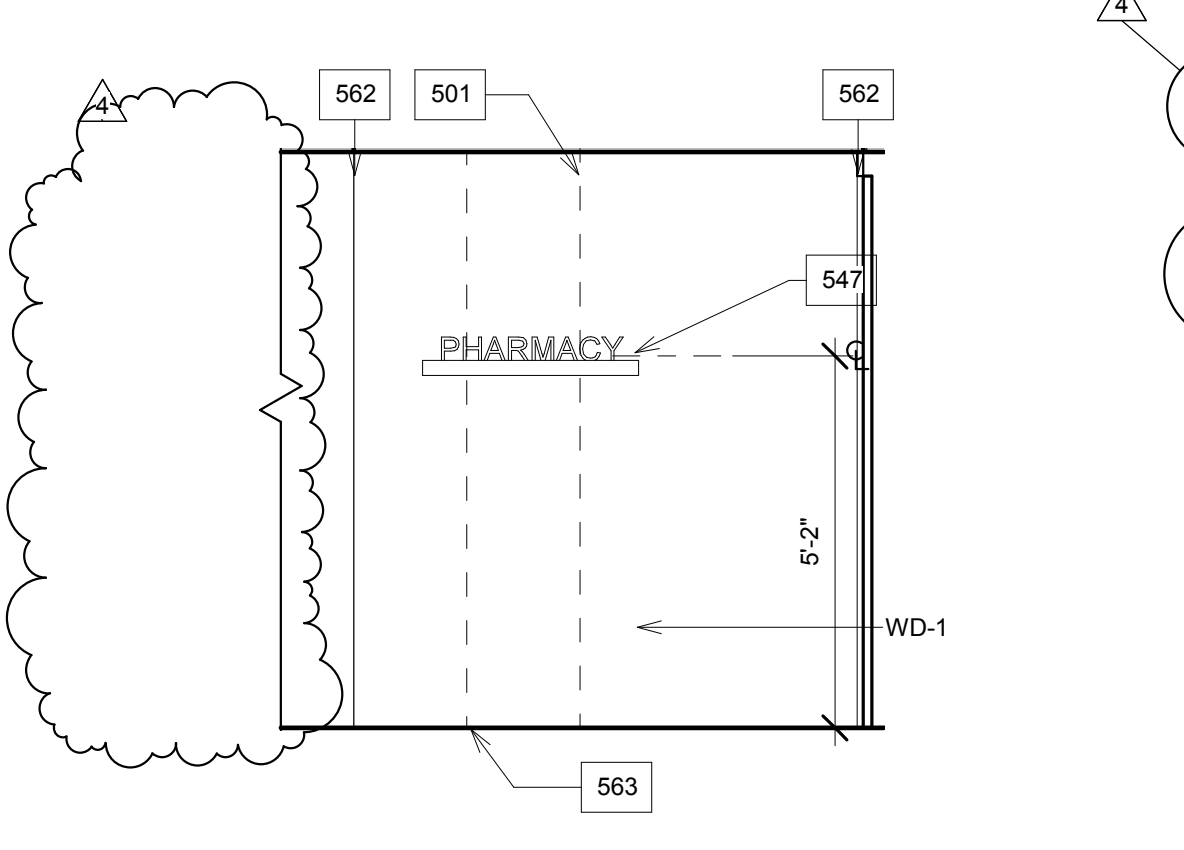
Drawn By: Author
 Checked By: Checker
 Approved By: Approver



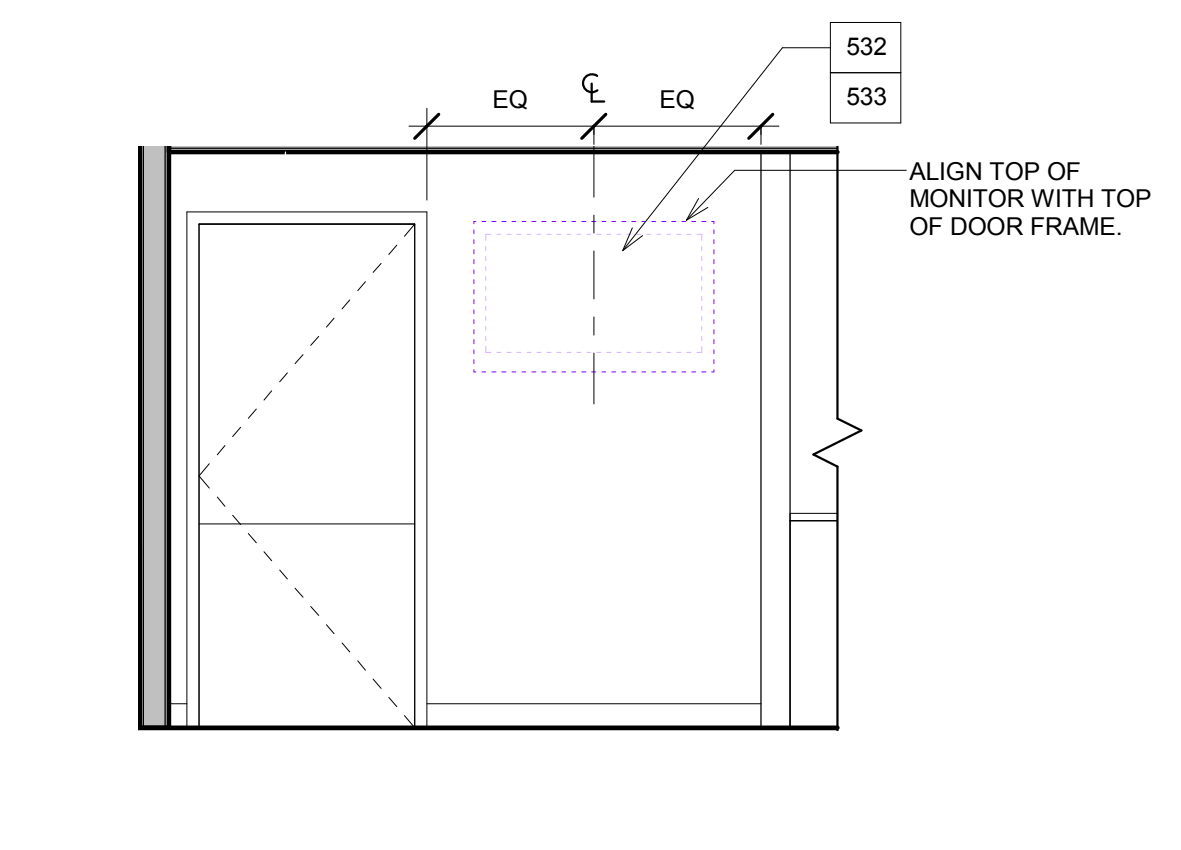
1 ENLARGED PLAN PUBLIX PHARMACY - D151



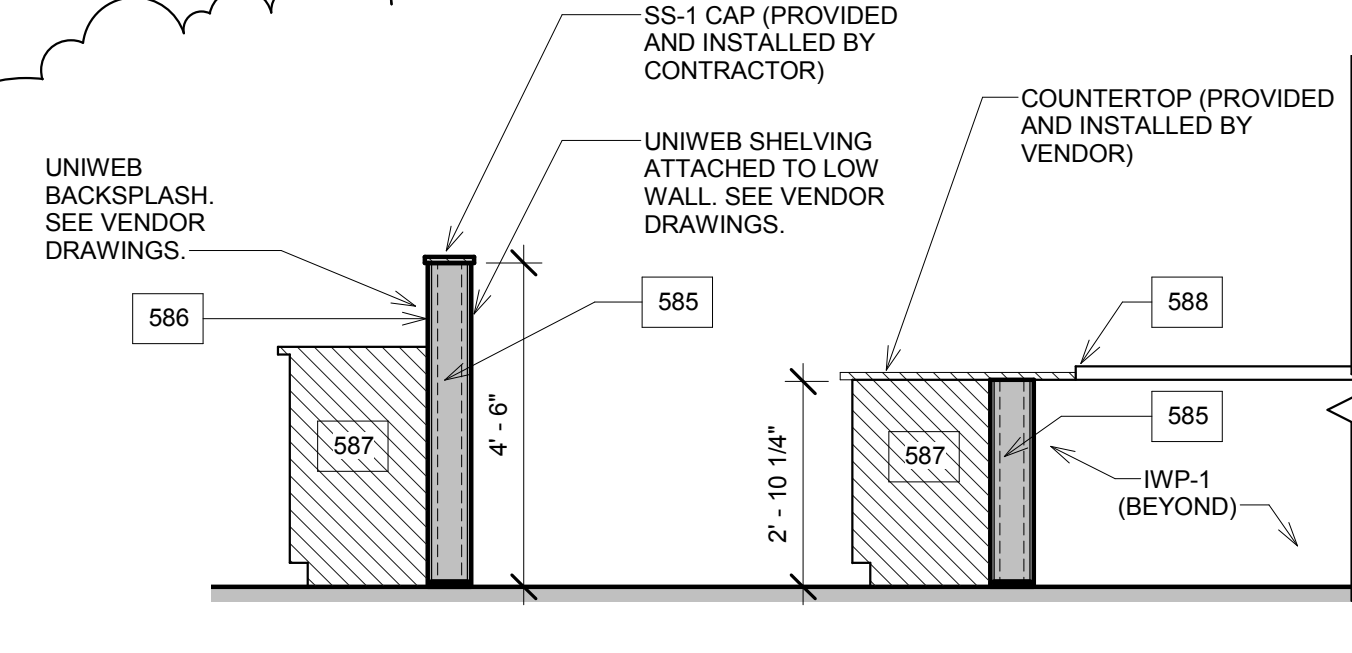
2 ENLARGED REFLECTED CEILING PLAN RETAIL PHARMACY - D151



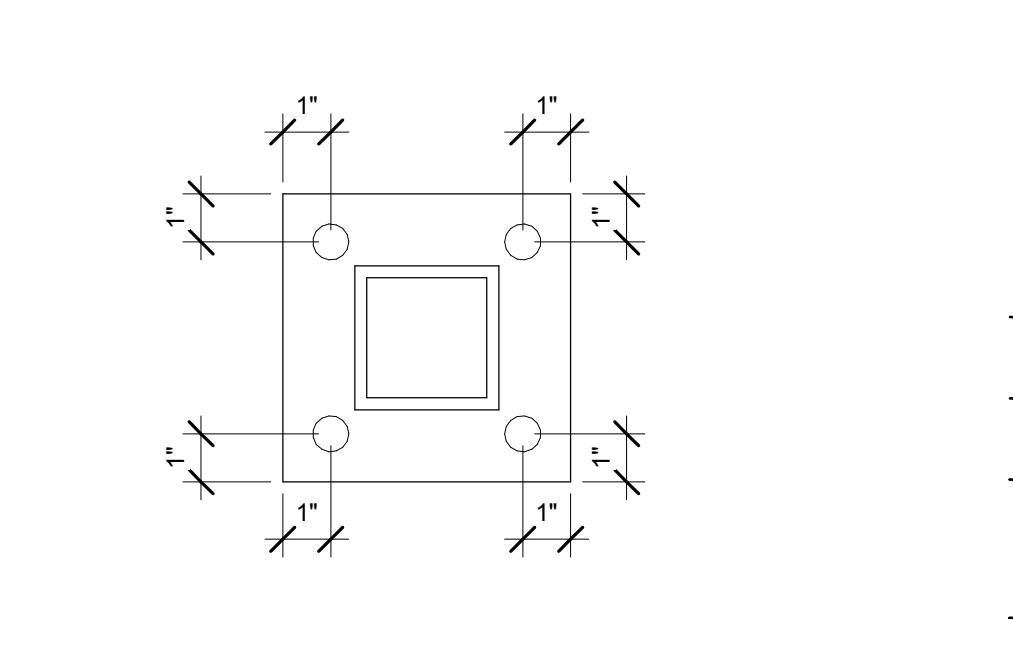
1A PUBLIX PHARMACY - D151



1B PUBLIX PHARMACY - D151



1C SECTION DETAIL AT LOW WALLS



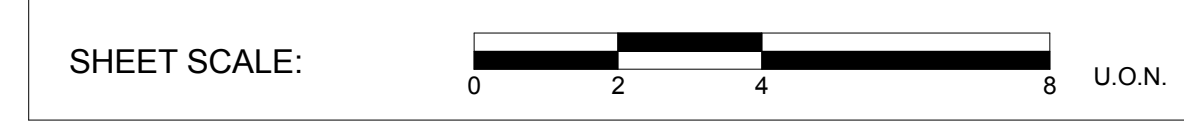
1D EMBED SCREWS AT BASE PLATE DETAIL NOT TO SCALE

SHEET SPECIFIC KEYNOTES FOR ENLARGED PLANS AND INTERIOR ELEVATIONS

- 229 PROVIDE MANUAL IN-LINE STACKING GLASS SLIDING DOOR SYSTEM. SEE SPECIFICATION 08 4113.
- 501 DASHED LINE INDICATES WOOD WALLCOVERING (WD-1) SEAMS
- 508 DASHED LINE INDICATES BUTT JOINTED PLASTIC LAMINATE SEAM
- 532 SEE DETAIL 9/A8.02 FOR BLOCKING FOR OWNER FURNISHED WALL MOUNTED TELEVISION
- 547 4" X 3" (TO BE PAINTED P-25) TO HOLD SIGNAGE. SHELF TO OVERHANG SIGNAGE BY 2" ON EITHER SIDE. COORDINATE WITH SIGNAGE PACKAGE. REFER TO DETAIL 11/A6.15
- 562 PROVIDE FRY REGLET AT OUTSIDE CORNER (DMCT-375)
- 563 PROVIDE FRY REGLET AT EDGE OF WALLCOVERING JOINTS
- 565 PROVIDE (VERTICAL) STEEL POSTS (HSS 4X4X1/4) AT 5'-0" SPACING ALONG WALL WITH BASE PLATE (PL 1/2X3/16) WITH (4) 3/8" DIAMETER X 3-1/4" EMBED HILTI HUEZU SCREW ANCHORS. SEE DETAIL ON THIS SHEET
- 586 SEE VENDOR DRAWING FOR DESCRIPTION AND LOCATION OF EQUIPMENT. OWNERS VENDOR (PUBLIX) TO PROVIDE AND INSTALL EQUIPMENT UNLESS OTHERWISE NOTED. NOTE THAT FLOOR MOUNTED UNIBEW SHELVING UNITS SHALL BE INSTALLED PRIOR TO CARPET FLOORING.
- 587 SEE VENDOR DRAWING FOR DESCRIPTION AND LOCATION OF CASEWORK. OWNERS VENDOR (PUBLIX) TO PROVIDE AND INSTALL CASEWORK. NOTE THAT CASEWORK SHALL BE INSTALLED PRIOR TO CARPET FLOORING.
- 588 INSTALL CHAIR RAIL AND IMPACT WALL PROTECTION PER 02.1A2 AND 9/A8.16. CHAIR RAIL TO TERMINATE AT VENDOR INSTALLED COUNTERTOP
- 589 DOOR CONTACTS INSTALLED BY OWNER'S VENDOR (PUBLIX) AND COORDINATED WITH HANAWALL
- 590 CONTRACTOR TO COORDINATE INSTALLATION RESPONSIBILITY OF BAYCARE IT/IS PHONE WITH OWNER PROVIDE ALTERNATE PRO2-A FOR INSTALLATION AND CONNECTION OF PHONES
- 591 CONTRACTOR TO COORDINATE INSTALLATION RESPONSIBILITY OF DATA CONNECTIONS FOR COMPUTER WORK STATIONS WITH OWNER PROVIDE ALTERNATE PRO2-B FOR INSTALLATION OF DATA PULLS AND TERMINATION
- 592 PROVIDE BLOCKING IN CEILING FOR ILLUMINATED SIGN. SEE VENDOR (PUBLIX) DRAWINGS
- 593 PROVIDE AND INSTALL 3/4" FIRE RETARDANT PLYWOOD FLOOR TO CEILING FOR PUBLIX TELEPHONE COMMUNICATION SECTION.
- 594 PROVIDE BLOCKING FOR PUBLIX PROVIDED AND INSTALLED UNIBEW SHELVING AND/OR UNIBEW BACKSPLASH
- 595 INSTALL PLUGMOLD AFTER CASEWORK IS INSTALLED.
- 596 WIRELESS ACCESS POINT PROVIDED AND INSTALLED BY PUBLIX. CONTRACTOR TO PROVIDE ALTERNATE PROC-2 FOR PROVIDING AND INSTALLING GATE CABLE CONNECTION.
- 597 ALL SIGNAGE WITHIN THE PUBLIX PHARMACY (D151) TO BE PROVIDED AND INSTALLED BY OWNERS VENDOR (PUBLIX).
- 598 CEILING MOUNTED CAMERA PROVIDED AND INSTALLED BY PUBLIX. SEE VENDOR DRAWINGS AND COORDINATE WITH VENDOR.
- 599 WHERE INDICATED BY REFERENCE TO THIS NOTE, PROVIDE BACKING PER MANUFACTURER'S CUT SHEET AND REFER TO WALL BLOCKING REQUIREMENT TABLE ON SHEET K1.6

SEE SHEET A8 32 2012 FLORIDA ACCESSIBILITY CODE REQUIREMENTS FOR ADDITIONAL CLEARANCE AND MOUNTING HEIGHT INFORMATION.

FOR DETAILED EQUIPMENT INFORMATION, REFER TO MEDICAL EQUIPMENT BOOK PROVIDED BY HB AND ASSOCIATES TECHNOLOGY PLANNING SERVICES.



ALL ROOM NUMBERS WITH THE PREFIX 'T' SHALL NOW HAVE THE PREFIX 'D' TO REFLECT THE NAMING OF THE DOYLE TOWER.



Design Services For The Built Environment

- Atlanta
- Birmingham
- Cincinnati
- Columbus
- Dallas
- Fort Lauderdale
- Jackson
- Jacksonville
- Knoville
- Louisville
- Memphis
- Nashville
- Richmond
- Tampa

GRESHAM SMITH AND PARTNERS

Two Harbour Place
 302 Knights Run Avenue
 Tampa, FL 33602
 Suite 900
 813-251-6838
 FIRM'S FLORIDA CERT. NO. AP00000048308
 I#26000797LC26000381

Morton Plant Hospital

PATIENT TOWER

PATIENT TOWER EXPANSION & RENOVATION PACKAGE

300 Pinellas Street
 Clearwater, FL 33756

CONSTRUCTION DOCUMENTS

ROBERT BERRY, AIA
 AIRR 91956
 TO THE BEST OF MY KNOWLEDGE AND BELIEF, I AM PROVIDING THE INFORMATION AND DESIGN I AM PROVIDING IN ACCORDANCE WITH THE APPLICABLE CODES LISTED ON SHEET A1.1

Revision		
No.	Date	Description
1	05/09/14	Addendum 1
2	09/05/16	ASI 014
3	12/09/16	CCD 013
4	06/06/17	PR 002

LEVEL 1 - ENLARGED PLANS & INTERIOR ELEVATIONS

A5.16

PROJECT: 28663.00
 DATE: 11/25/13